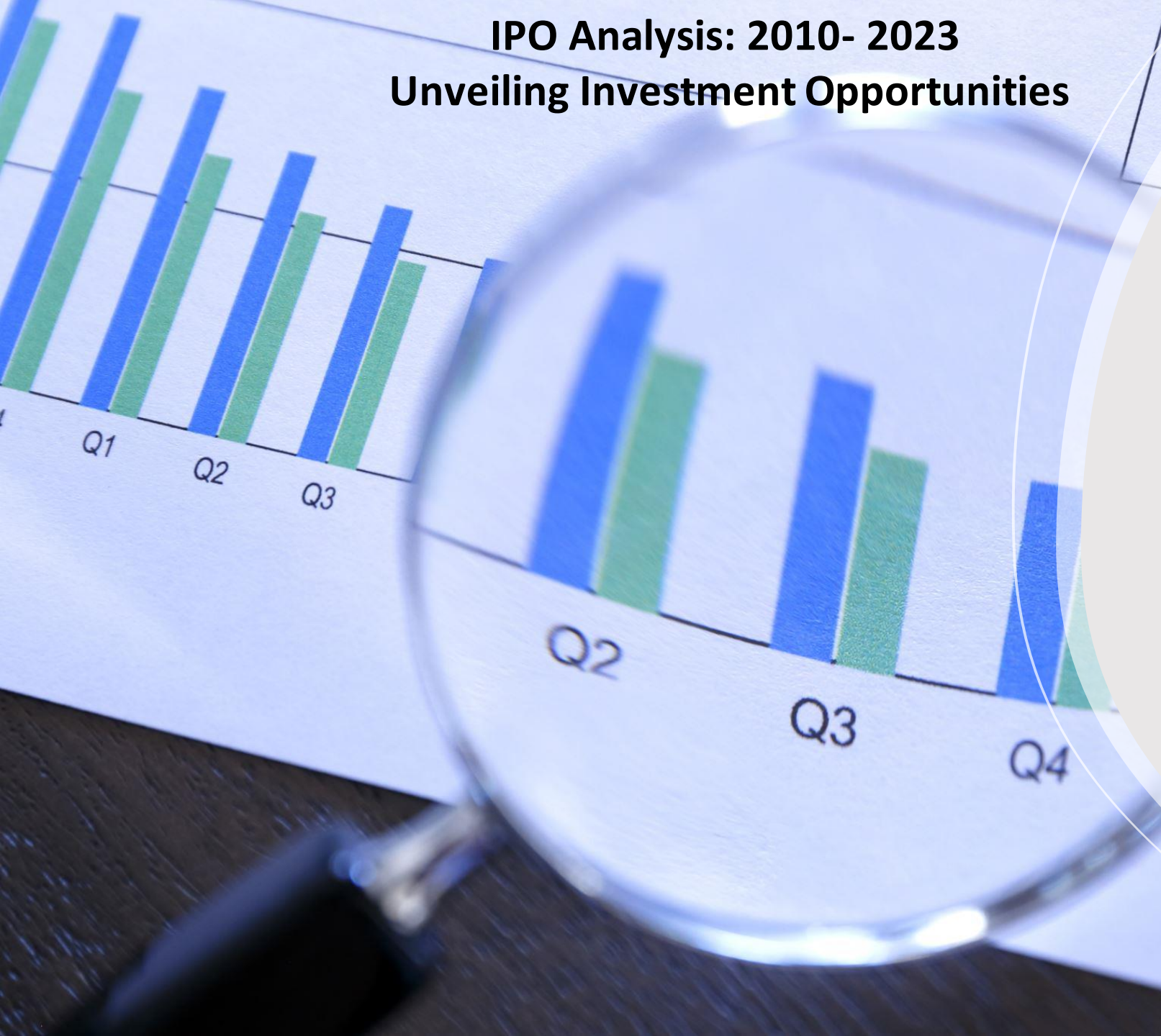


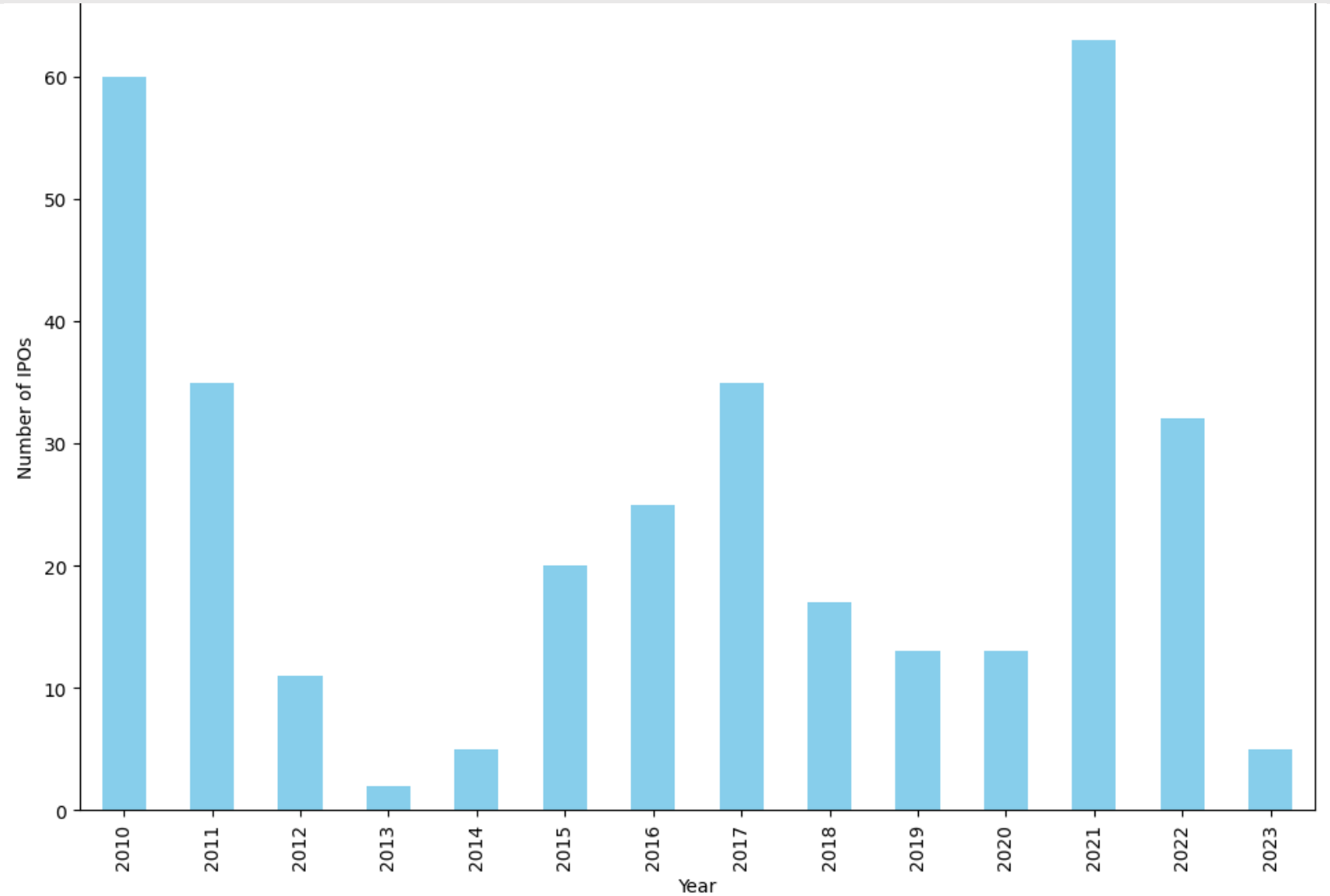
IPO Analysis: 2010- 2023

Unveiling Investment Opportunities

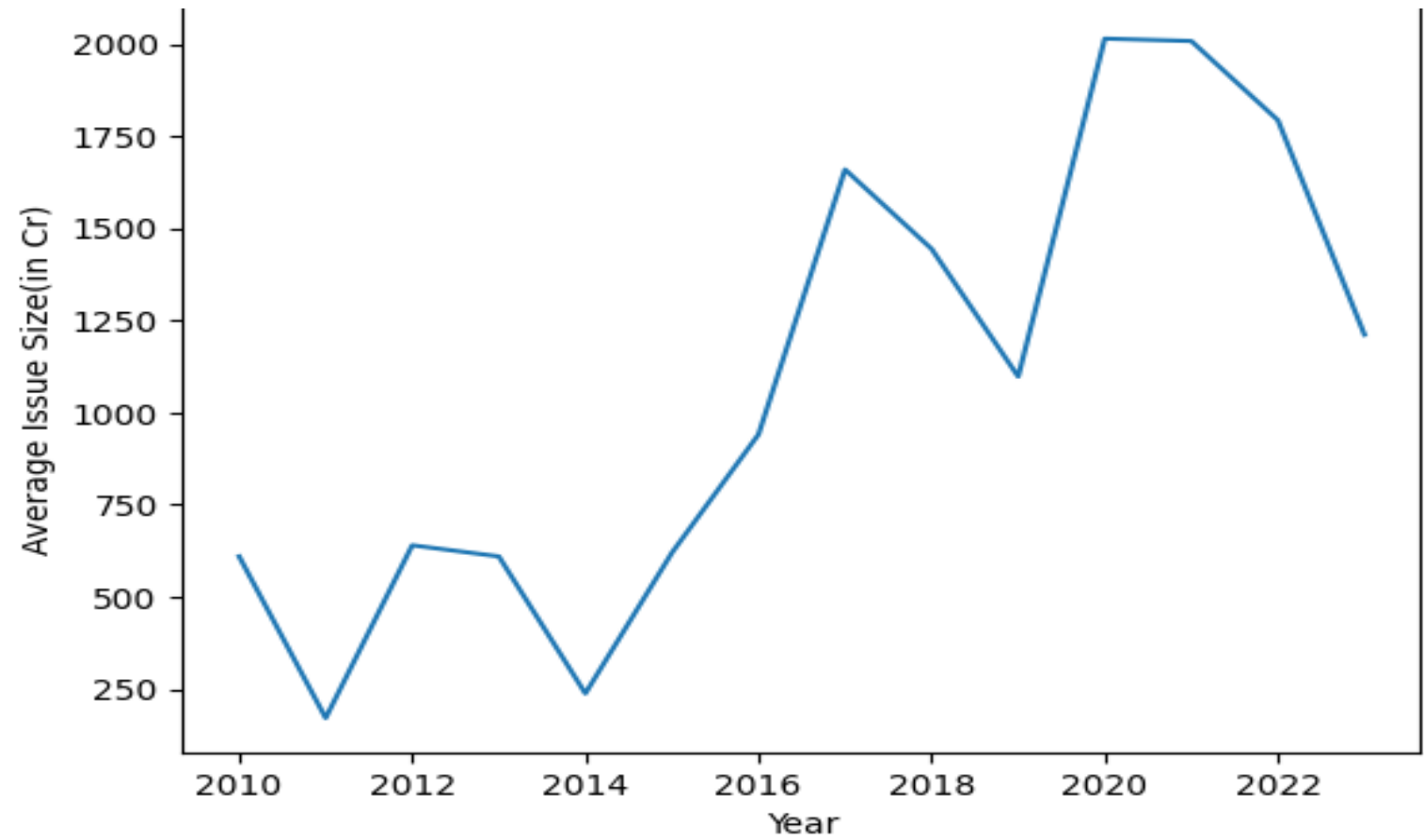


Purpose : To get insights into the performance of IPOs issued between 2010 and 2023, comparing them to NIFTY returns and highlighting sector-wise trends.

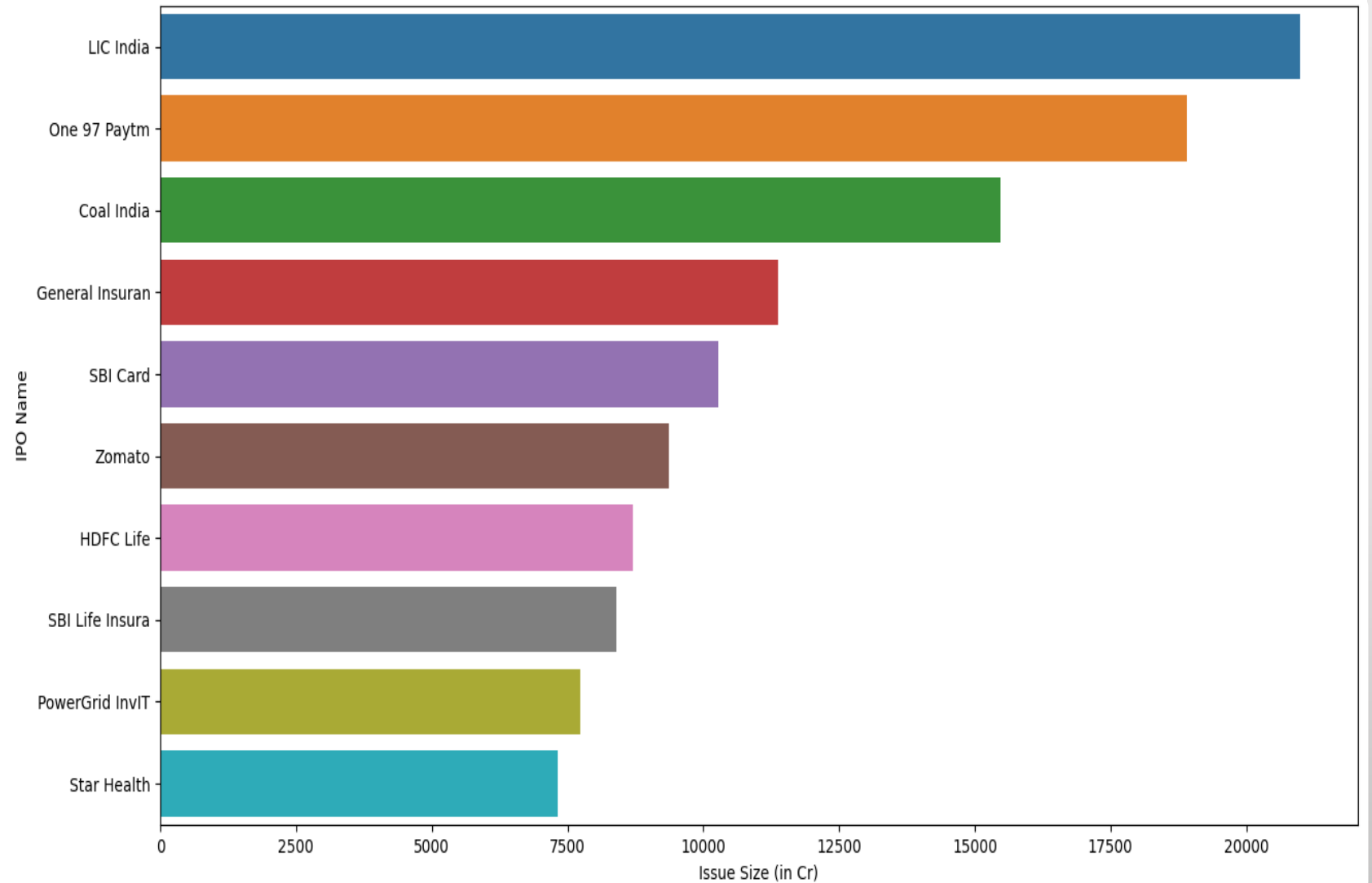
Year wise issue of IPOs



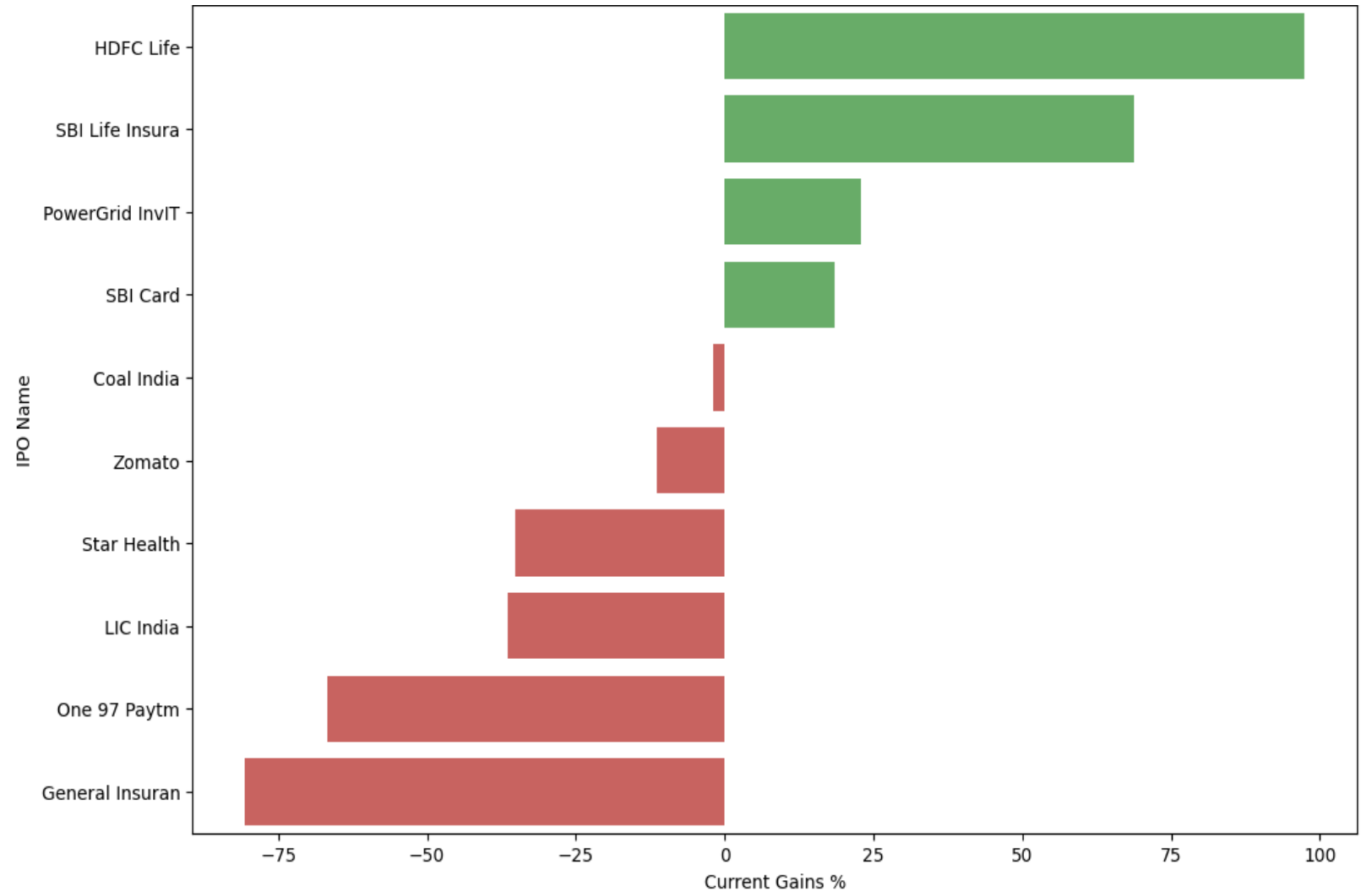
Trend of Average Issue Size Over Time



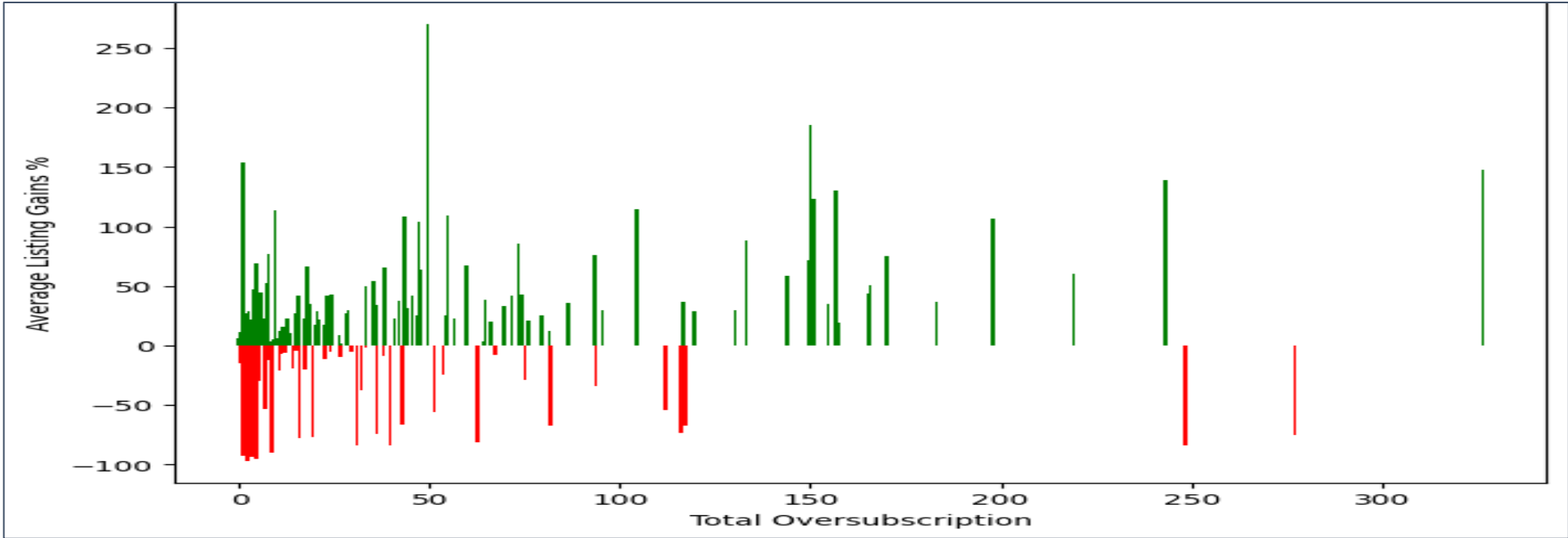
Top 10 IPOs in terms of issue size



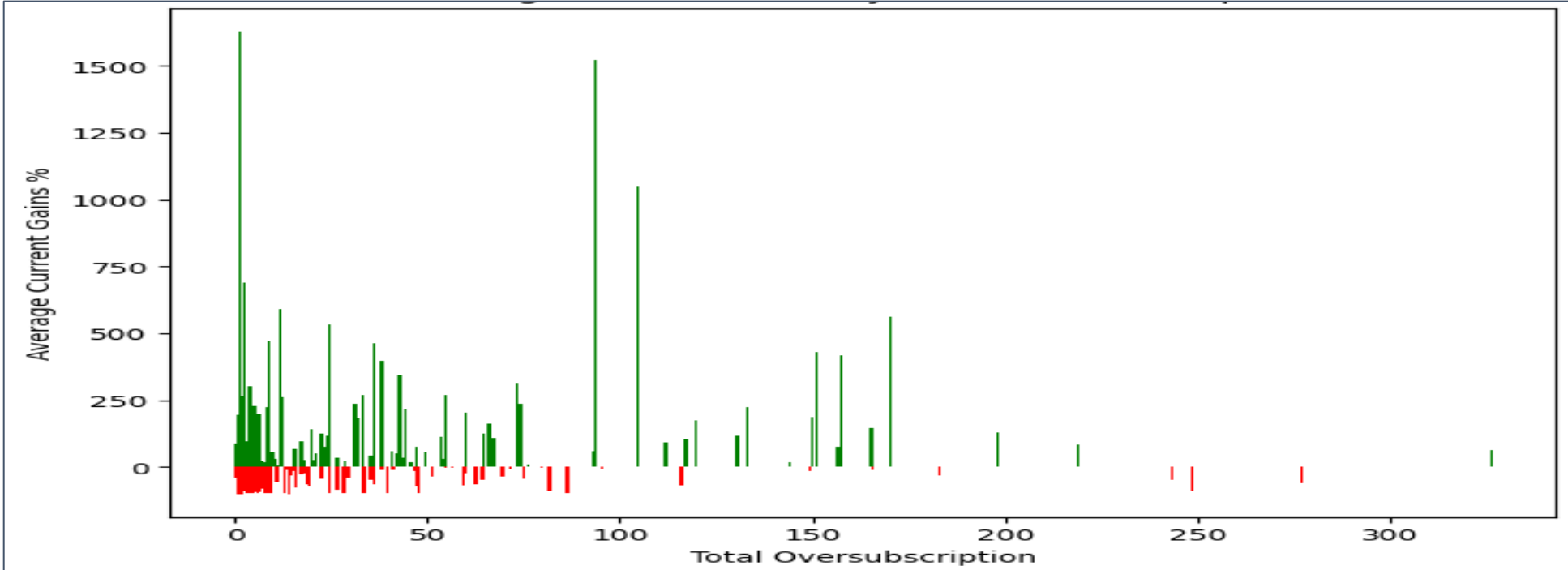
Current Gain % of Top 10 issue size



Avg. Listing Gain In
Terms of
Oversubscription

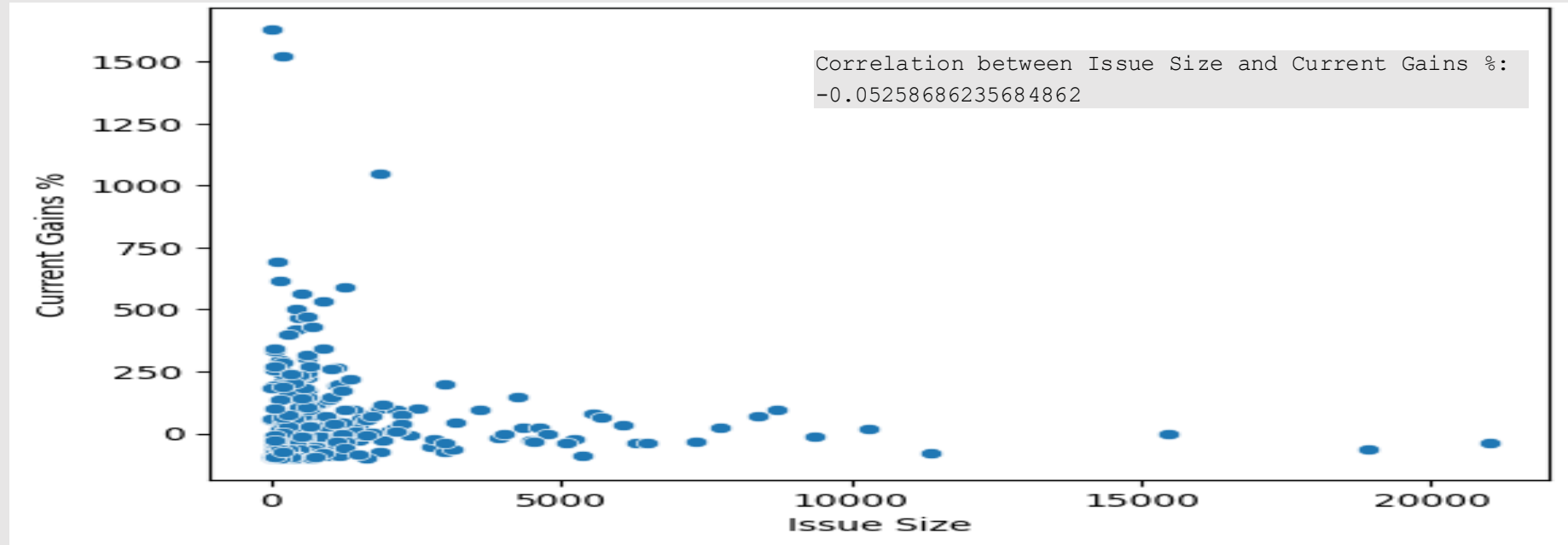


Avg. Current Gain %
In Terms of
Oversubscription

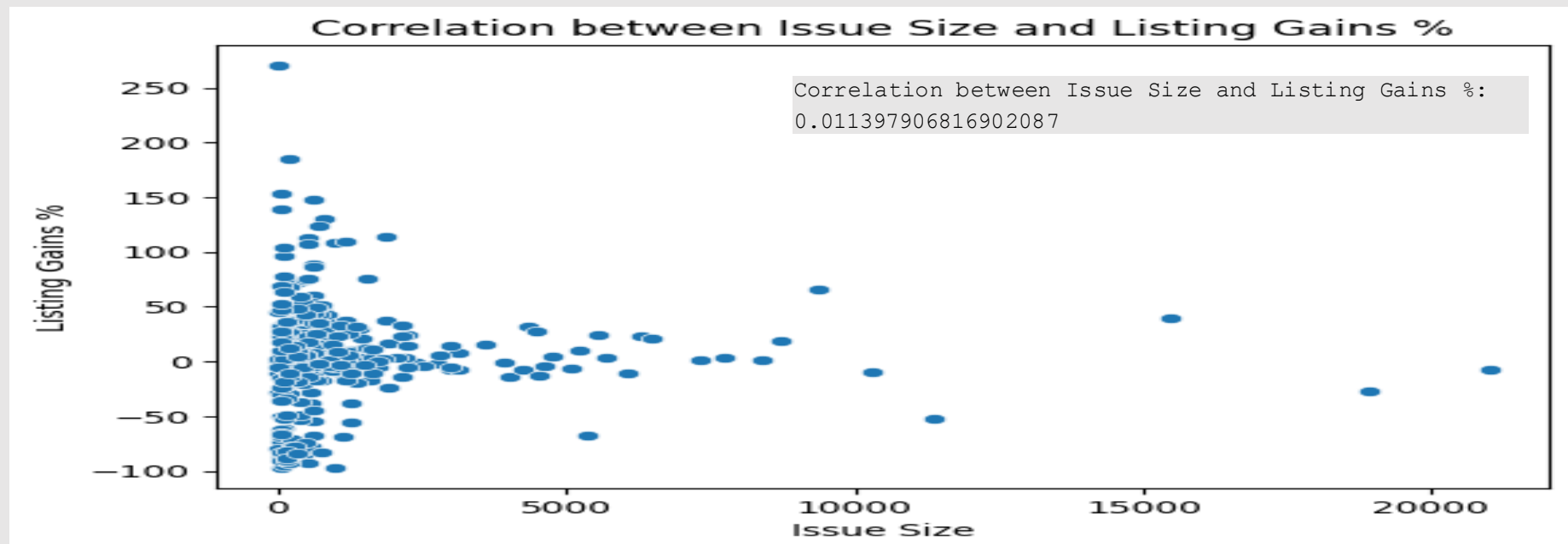


Correlation Analysis

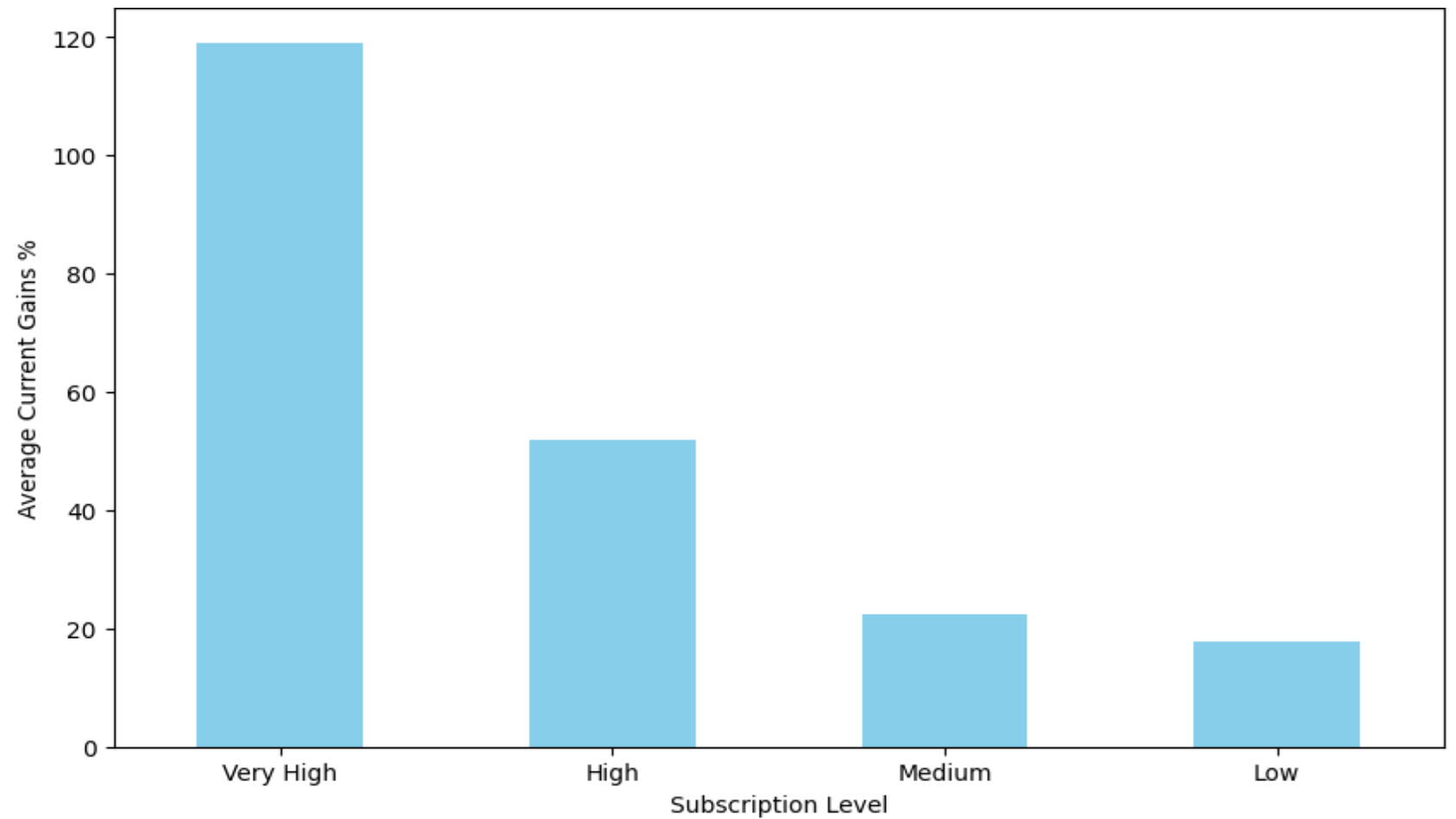
Correlation between issue size and current gains %



Correlation between issue size and listing gains %

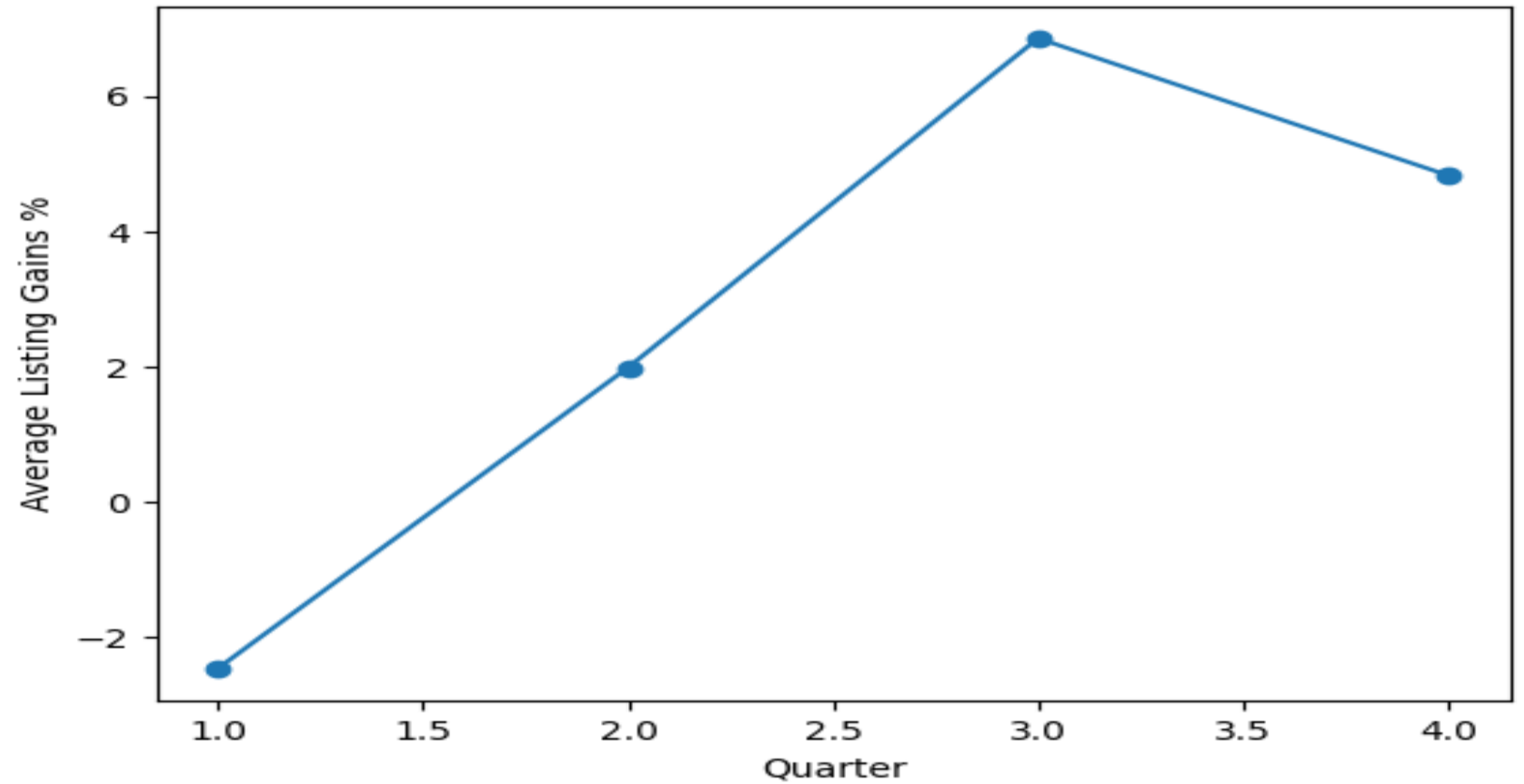


Avg. Current
Gain% in terms of
subscription
level*



*Subscription Level: 'Low' (0-2x), 'Medium' (2-10x), 'High' (10-50x), and 'Very High' (50x and above)

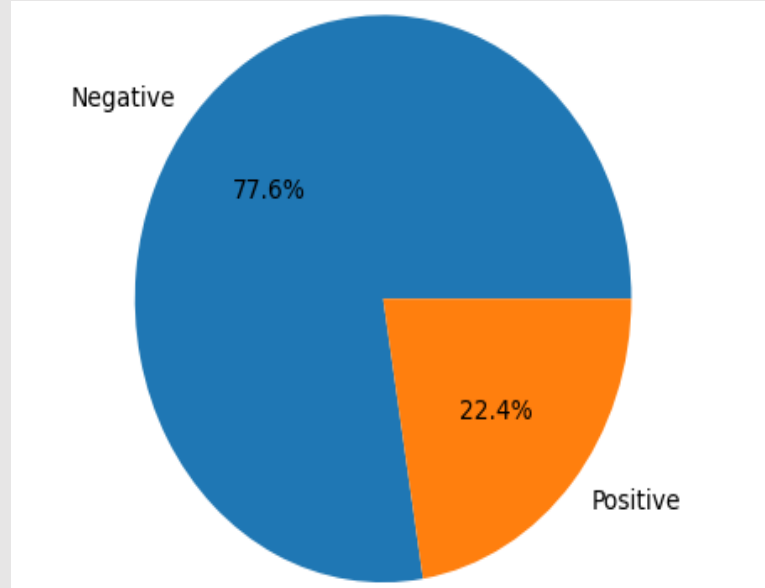
Trend of listing gains % by IPOs issued in different quarters of a year.



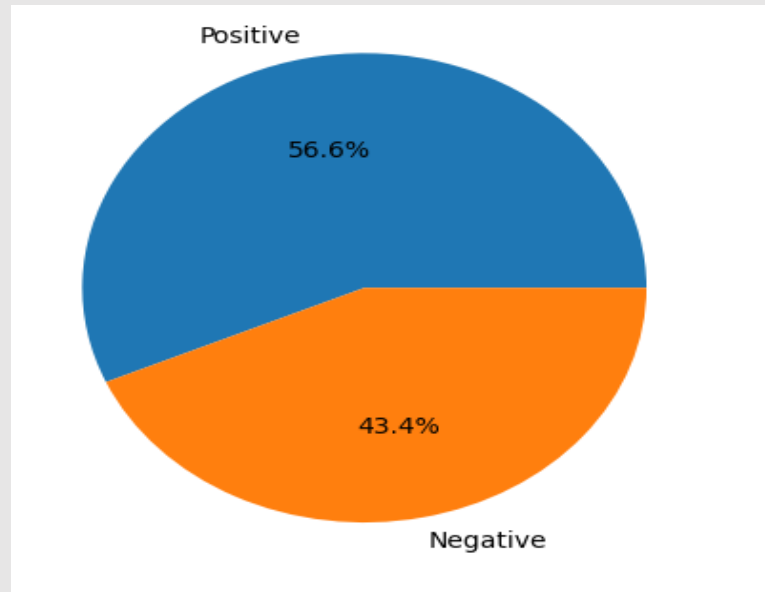
Insights : IPOs listed in the third quarter gave more listing gains

Current gain % analysis of IPOs

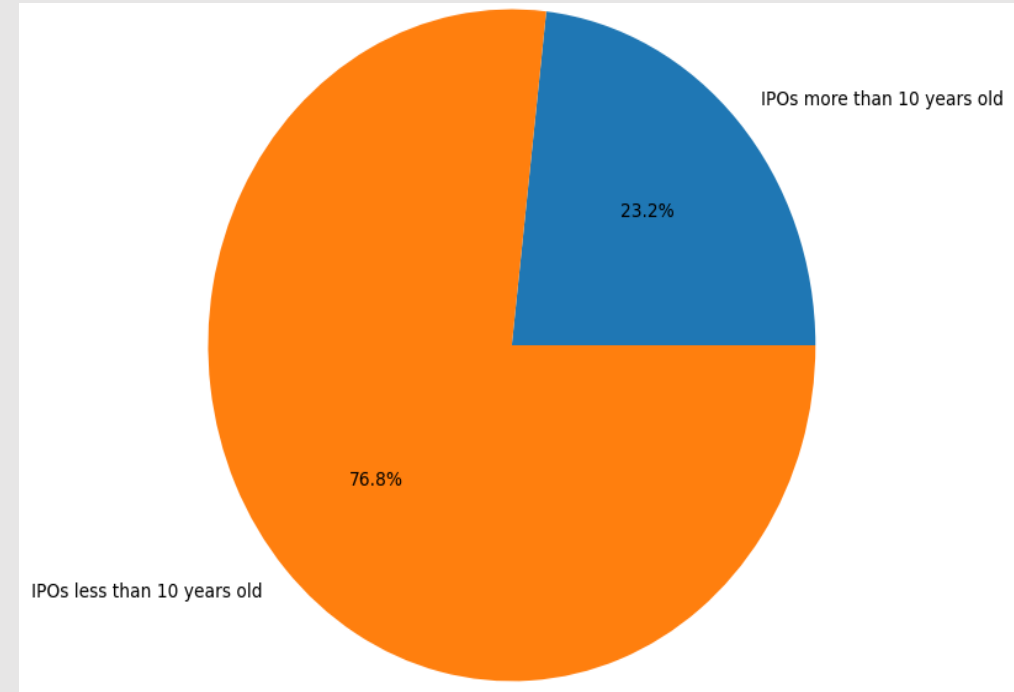
% of IPOs giving +ve and -ve neturs which are more than 10 years old



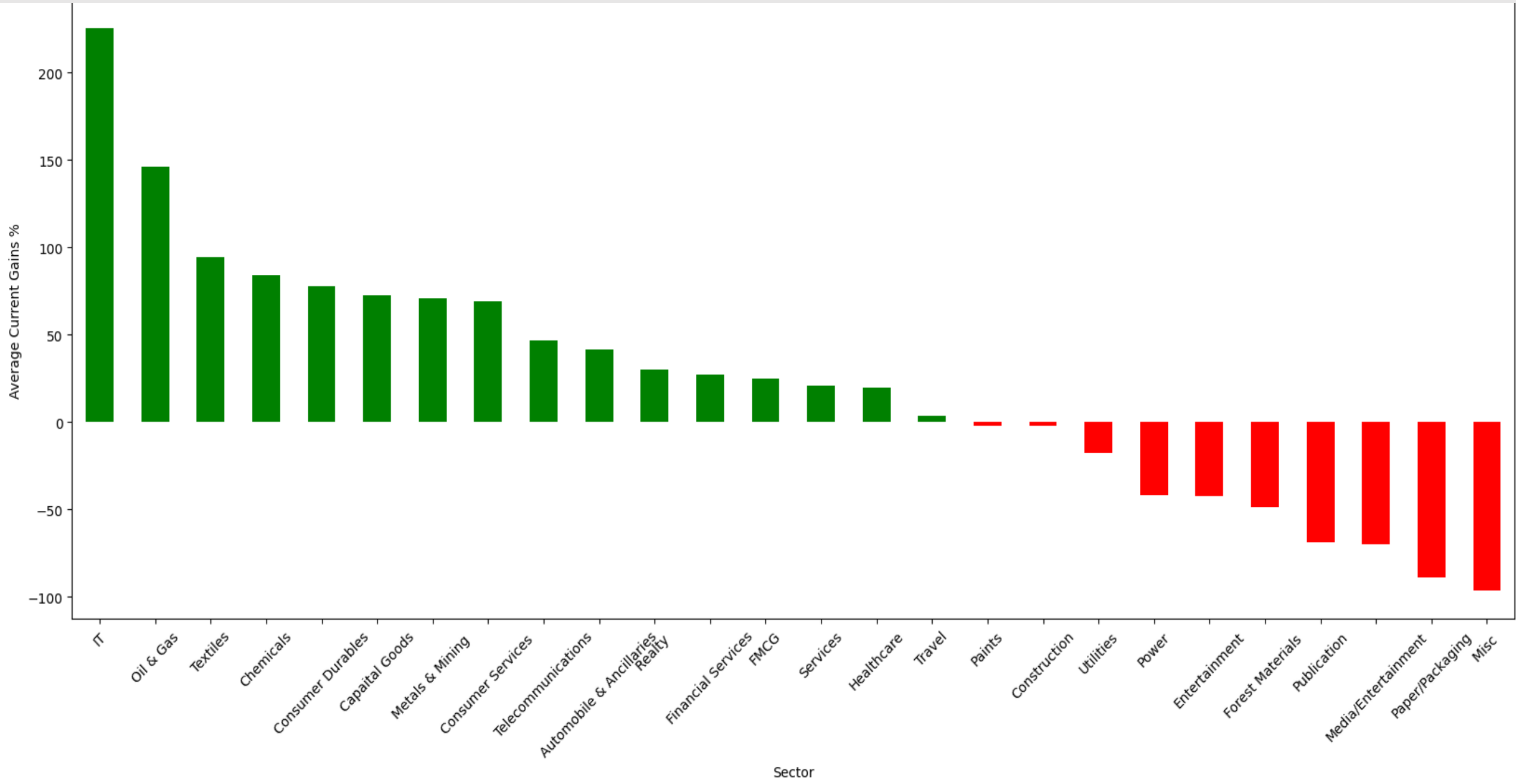
% of IPOs giving +ve and -ve neturs which are less than 10 years old



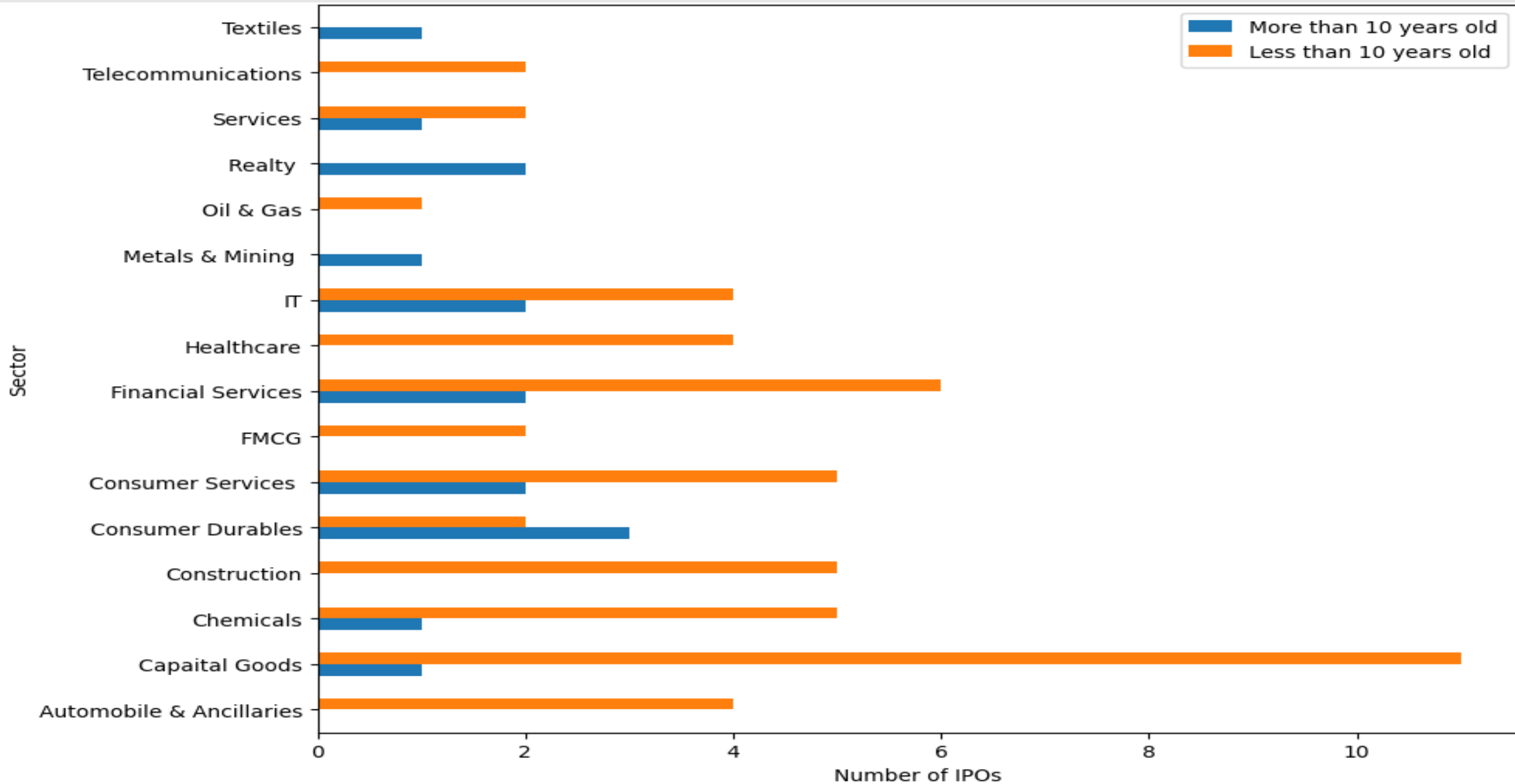
% of IPOs with more than 100% returns



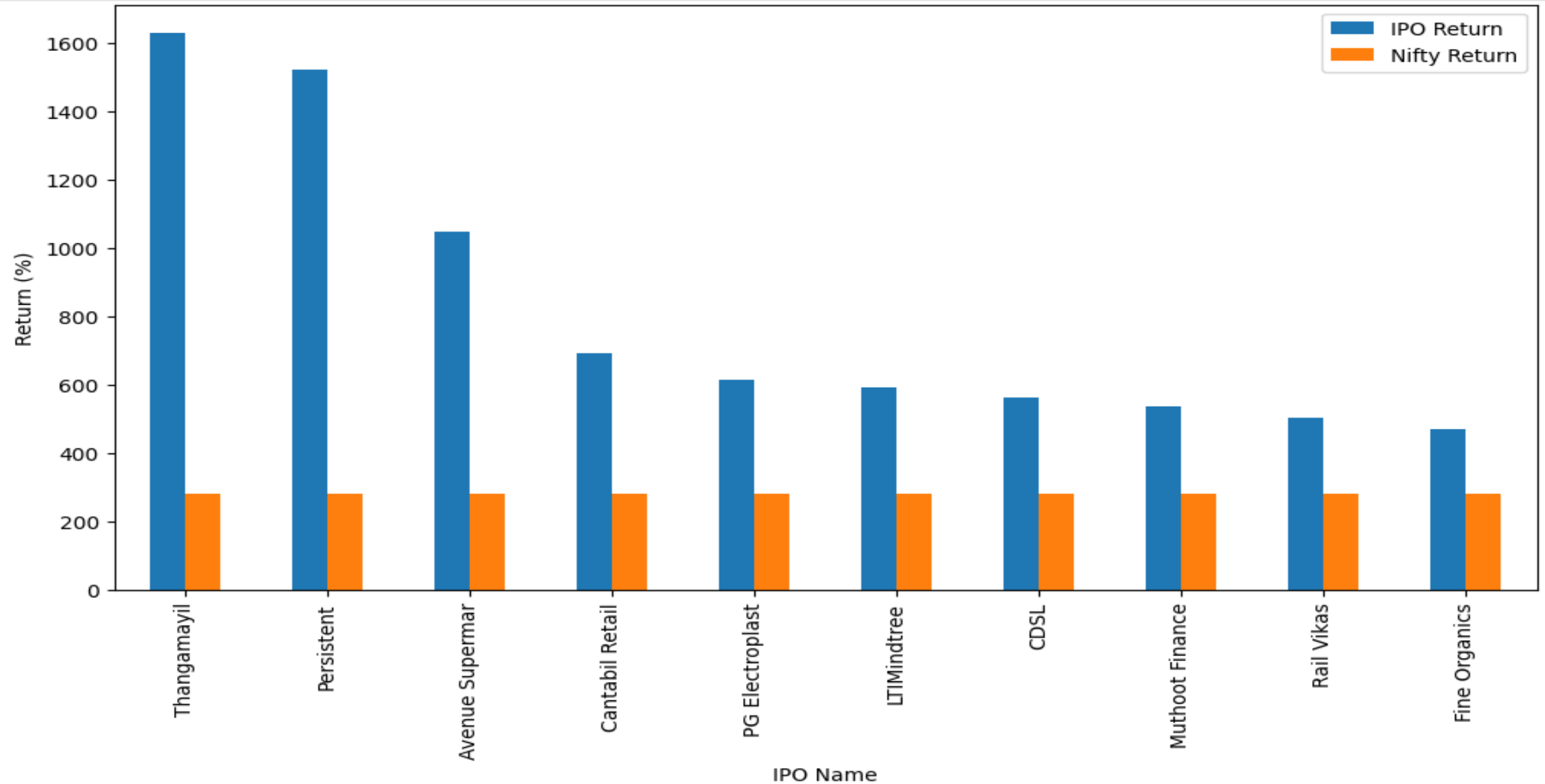
Sector wise average current gain % of IPOs over the period from 2010 - 2023



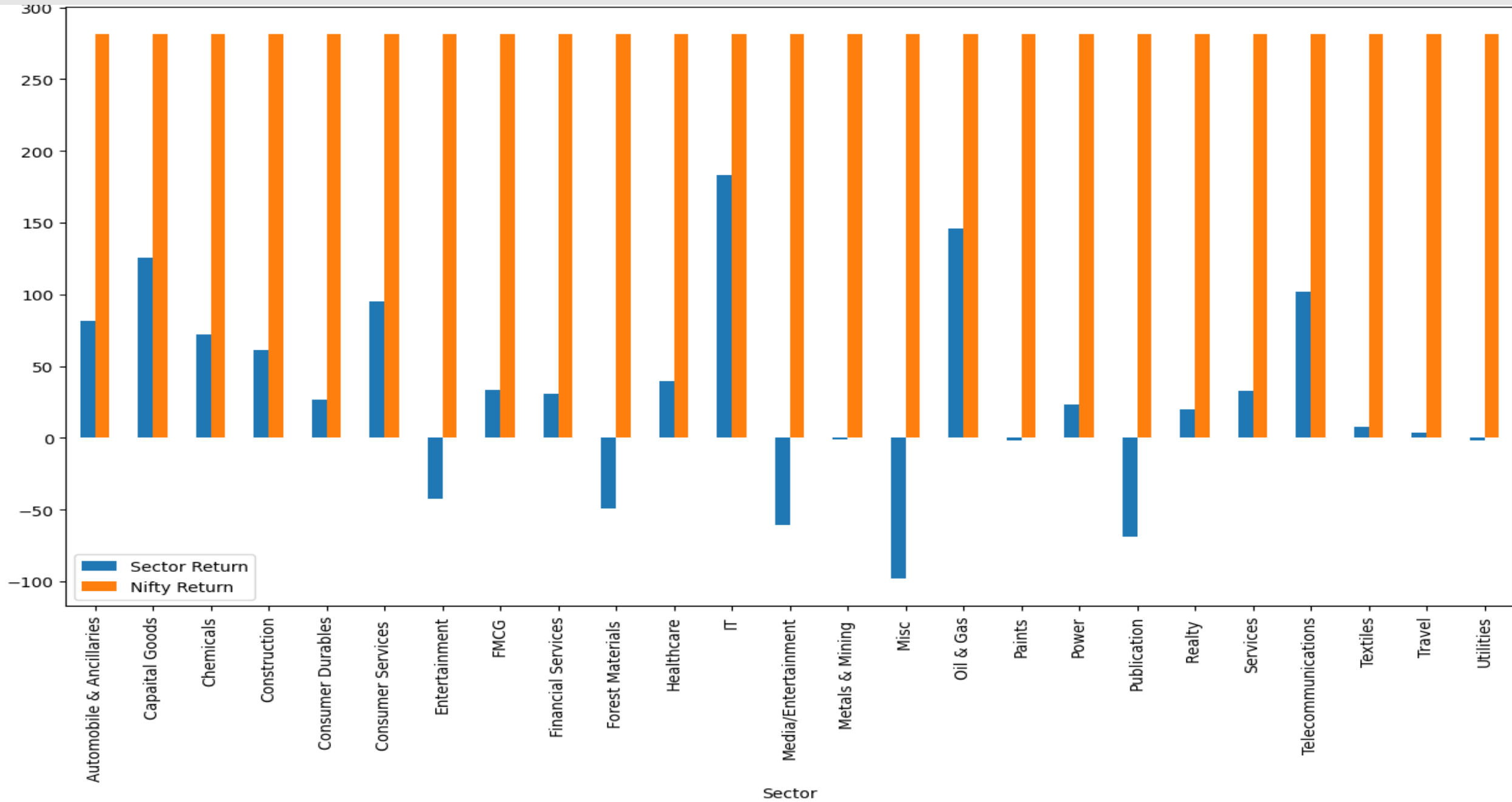
Sector wise IPO numbers with more with more then 100% return



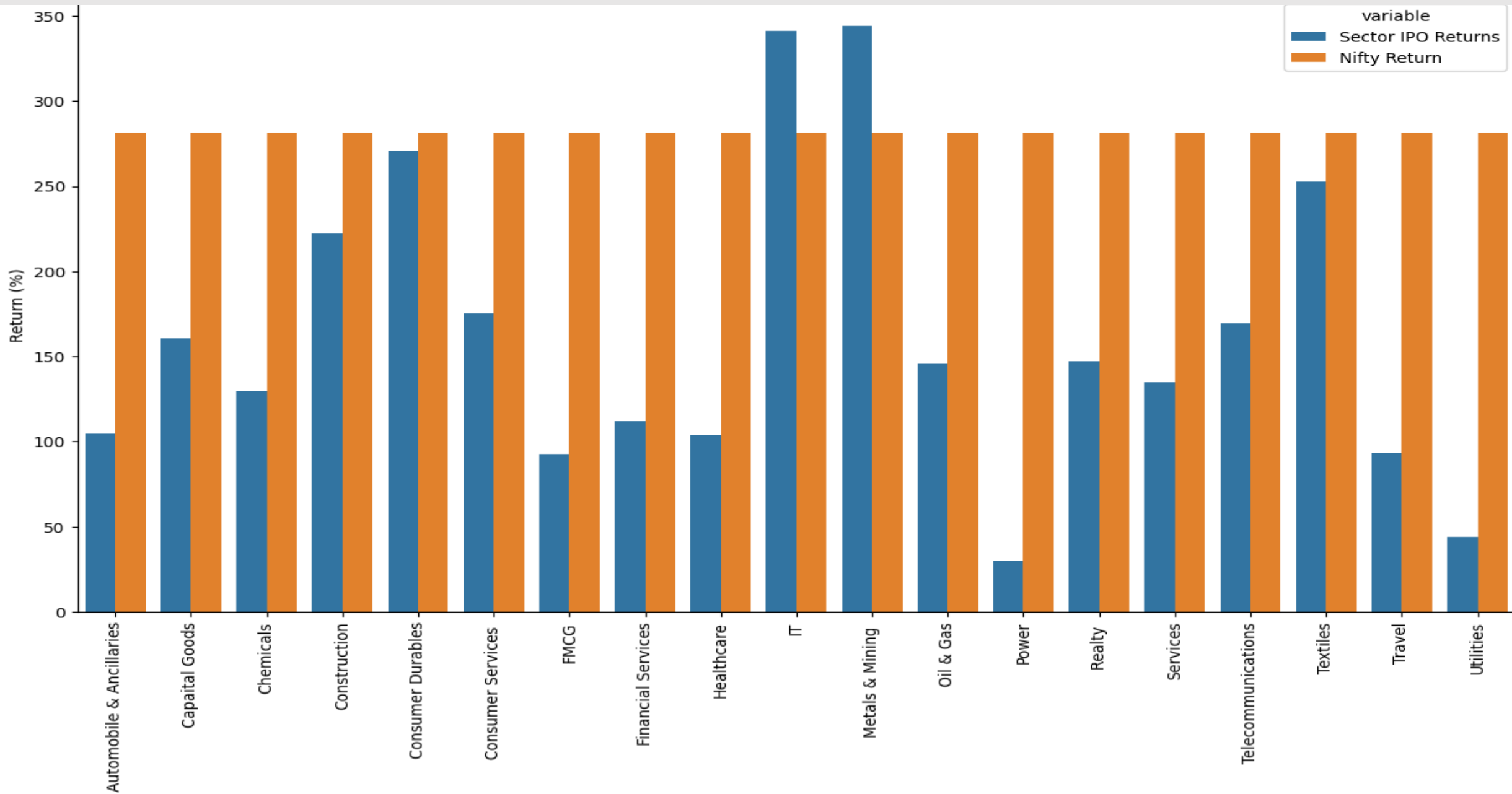
Return Comparison : Top 10 IPOs vs. Nifty



Comparison of IPO sector returns with Nifty for IPOs < 10 yrs. old



Nifty return vs IPO sectoral return for the period 2010 -2023



Thank You

- Visit my Github repo :
https://github.com/deb423/IPO_Analysis